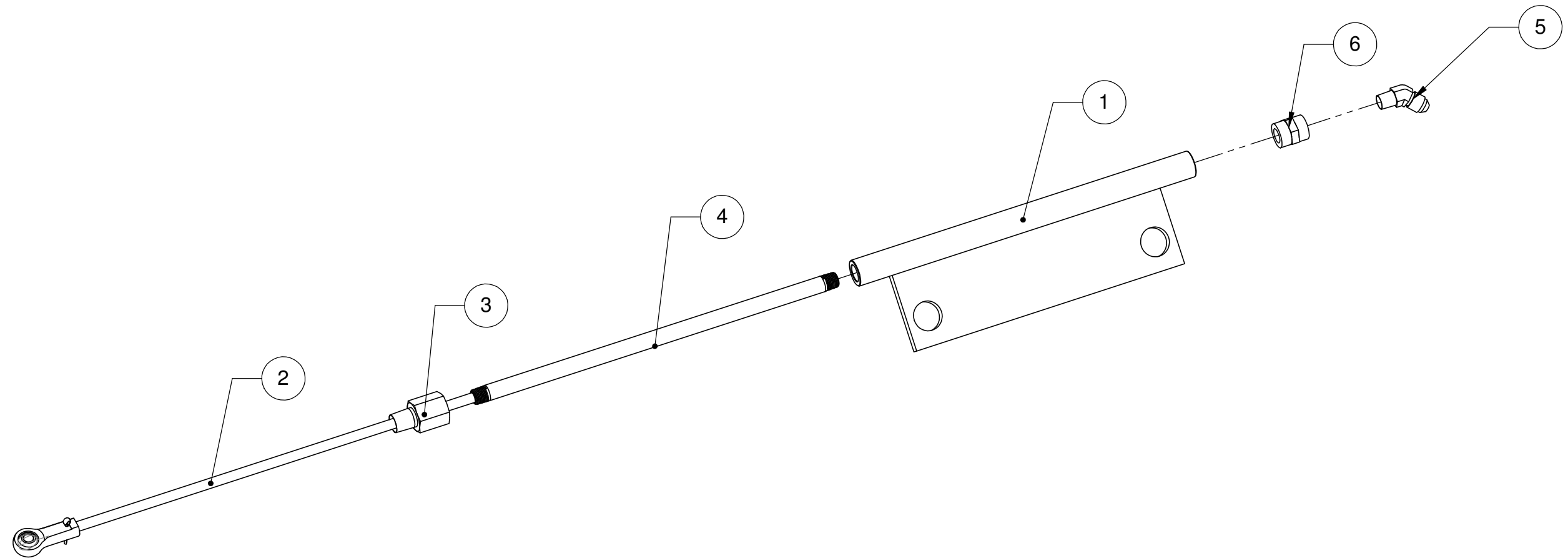



ITEM NO.	PART NUMBER	DESCRIPTION	QTY
1	20563	ADAPTER GUIDE	1
2	13959	AUXILLIARY CYLINDER ROD & ROD END	1
3	14037	LENZ FITG	1
4	15450	.125" NIPPE	1
5	15580	ELBOW	1
6	15607	CPLG	1



ECN	REV	DESCRIPTION	DRAWN	CHECKED	DATE	UNLESS OTHERWISE STATED	TOLERANCE UNLESS OTHERWISE SPECIFIED	HUB CITY IRON WORKS		PROPRIETARY AND CONFIDENTIAL		
-	A	RELEASED FOR MANUFACTURING	PWF	SH	09/30/11	- ALL SHARP EDGES TO BE GROUND R0.125" - ALL WELDS IN ACCORDANCE WITH AWS D1.1 and KWS-001 - MARK/STAMP PT. # AND/OR W.O. # ON PARTS - $\phi \pm 0.063$	X" $\pm .5"$ X.X" $\pm .25"$ X.XX" $\pm .125"$ X.XXX" $\pm .063"$ X.XXXX" $\pm .010"$ X° $\pm 1°$	 BY: PWF DATE: 05/09/11 DRAWN: PWF DATE: 05/09/11 CHECKED: SH DATE: 09/30/11 APPROVED: SH DATE: 09/30/11		THE INFORMATION CONTAINED IN THIS DRAWING IS THE SOLE PROPERTY OF HUB CITY IRON WORKS. ANY REPRODUCTION IN PART OR AS A WHOLE WITHOUT THE WRITTEN PERMISSION OF HUB CITY IRON WORKS IS PROHIBITED. TITLE: AUXILLIARY CYLINDER ASSIST		
	B					MATERIAL	3rd ANGLE PROJECTION			DWG. No: 107-701-008-00 REV.: C		
	C					COATING		SAP. No: WT: LBS SHEET 1 OF 1				
	D					N/A						
	E					DO NOT SCALE ALL DIMENSION IN INCHES						
I	H	G	F	E	D	C	B	A				

001-101-005 REV A C:\00ENGRVAULT\Products\107 - Pipe Cleaning Machine\701 - Mechanical Sub Assemblies\