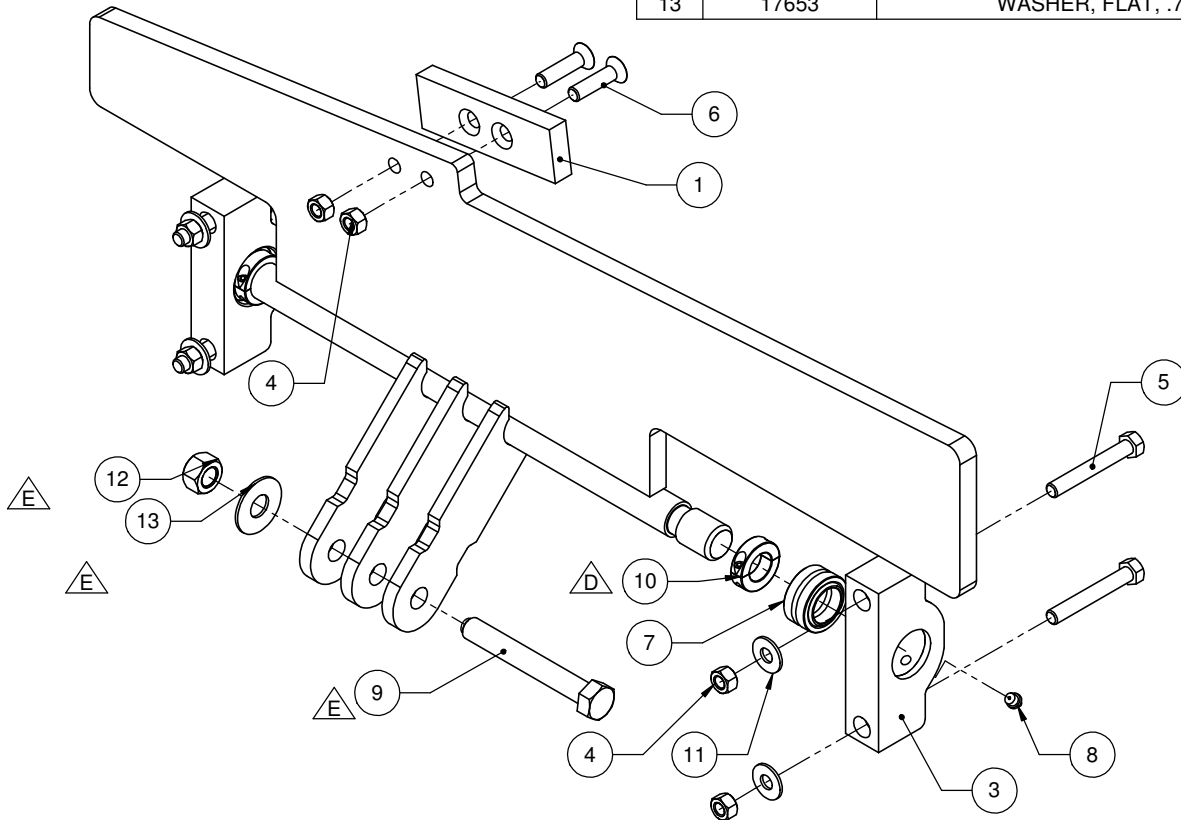

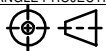


ITEM NO.	PART NUMBER	DESCRIPTION	QTY.
1	13592	PADDLE WEAR PAD 107-300-019-010	1
2	13606-RH-M	PADDLE FAB RH 107-700-045-00	1
3	13609	BEARING BLOCK 117-300-001-018	2
4	14124	NUT, HEX, .5" NC	6
5	14361	BOLT, HHCS, .50" X 3.50" NC GR5	4
6	14495	BOLT, FHSCS, .50" X 2"	2

ITEM NO.	PART NUMBER	DESCRIPTION	QTY.
7	14645	SPHERICAL BEARING	2
8	16086	GREASE ZERK, 1/8 NPT	2
9	50259	BOLT, HHCS, .75" X 5.50" NC GR8	1
10	16772	SPLIT COLLAR	2
11	17649	WASHER, FLAT, .50"	4
12	16321	NUT, LOCK, .75"	1
13	17653	WASHER, FLAT, .75"	1



ECN	REV	DESCRIPTION	DRAWN	CHECKED	DATE	UNLESS OTHERWISE STATED - ALL SHARP EDGES TO BE GROUND R0.125" - ALL WELDS IN ACCORDANCE WITH AWS D1.1 and KWS-001 - MARK/STAMP PT. # AND/OR W.O. # ON PARTS - $\phi \pm 0.063$	TOLERANCE UNLESS OTHERWISE SPECIFIED		PROPRIETARY AND CONFIDENTIAL THE INFORMATION CONTAINED IN THIS DRAWING IS THE SOLE PROPERTY OF HUB CITY IRON WORKS. ANY REPRODUCTION IN PART OR AS A WHOLE WITHOUT THE WRITTEN PERMISSION OF HUB CITY IRON WORKS IS PROHIBITED.	
-	A	RELEASED FOR MANUFACTURING	PWF	JWP	06/19/14		X" $\pm .5"$ X.X" $\pm .25"$ X.XX" $\pm .125"$ X.XXX" $\pm .063"$ X.XXXX" $\pm .010"$ X" $\pm 1"$		BY: PWF DATE: 04/14/14	TITLE: RH, PADDLE ASSEMBLY
0825	B	ADD DRAG LINK SPACERS	PWF	JBB	12/22/14	MATERIAL N/A	3rd ANGLE PROJECTION	CHECKED: JWP DATE: 06/19/14	DWG. No: 107-701-019-00	
1034	C	REMOVE SPACERS 107-300-023-901	PWF	JD	2/10/16	COATING N/A		APPROVED: JWP DATE: 04/09/18	REV.: G	
1043	D	CHANGE SNAP RING TO SPLIT COLLAR	PWF	RL	2/25/16				SAP. No: N/A	
1126	E	CHANGE SHOULDER BOLT TO GRADE 8 BOLT	PWF	RL	6/29/17				WT: 21.497 LBS	
	F	CHANGED DWG'S TO SAP-M'S	RL	JD	12/15/17				SHEET 1 OF 1	
	G	CHANGED PADDLE FAB TO -M	RL	RL	4/9/18					

001-101-005 REV A C:\00ENGRVAULT\Products\107 - Pipe Cleaning Machine\701 - Mechanical Sub Assemblies